



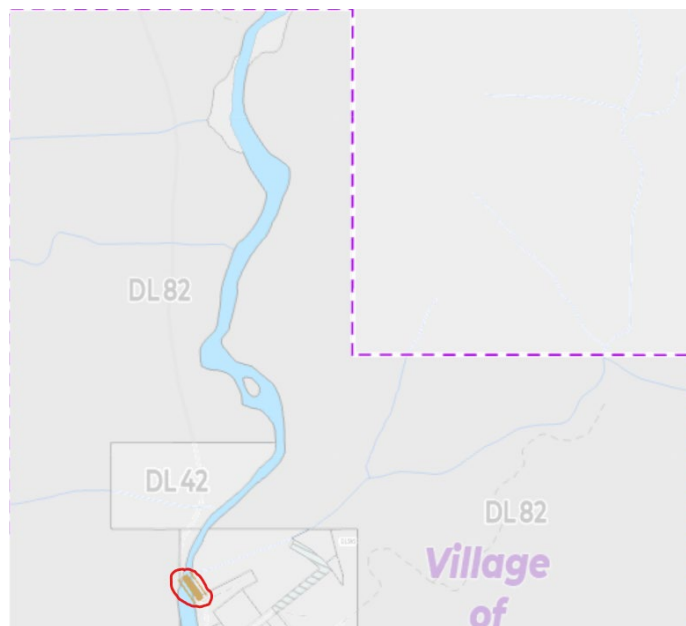
*Village of Tahsis*

## **Re: Notice of Perry Brothers Bridge Closure**

Please be advised that from May 4th to 31<sup>st</sup>, extensive repairs to the Perry Brothers Bridge are scheduled necessitating extensive closures to **all vehicle and pedestrian access, including emergency vehicles and emergency pedestrian access.**

The bridge plans to open on Saturdays only (May 9, 16, 23, and 30) to allow access to the Tahsis Comox Strathcona Waste Management Landfill. **The bridge will be closed from Sunday to Friday each week.** However, if major structural repairs are needed these openings may be cancelled or re-scheduled. The project will be extended beyond May 31<sup>st</sup> if construction is not completed.

Persons requiring access to District Lots 42, 595 and 82 and Crown Land north of the bridge during this period should make alternative arrangements prior to May 4th. The bridge location is shown below.



Questions can be directed to the Village office at [reception@villageoftahsis.com](mailto:reception@villageoftahsis.com) or at (250)934-6344.

*Village of Tahsis*  
977 South Maquinna Drive  
P.O. Box 219 Tahsis BC V0P 1X0  
TEL: (250) 934-6344 FAX: (250) 934-6622  
[www.villageoftahsis.com](http://www.villageoftahsis.com)